

### Tender specification:

Oventrop swing type check valves PN 16, both ports female thread according to ISO 228.

Bronze body, inner parts made of brass.

### Technical data:

PN 16 between  $-10^{\circ}\text{C}$  and  $+80^{\circ}\text{C}$

PN 10 between  $+80^{\circ}\text{C}$  and  $+120^{\circ}\text{C}$

### Function:

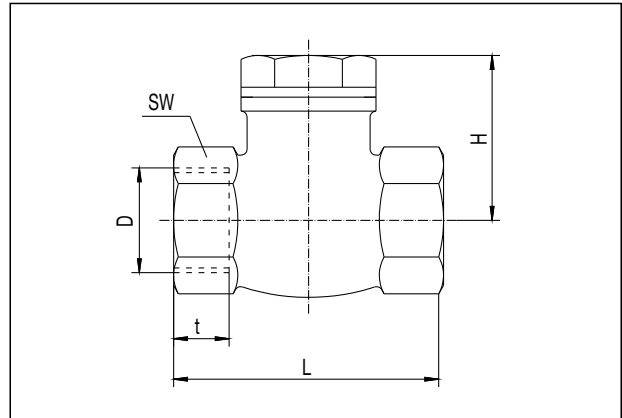
Oventrop swing type check valves are suitable for horizontal and vertical installation in the pipework.

Swing type check valves are not suitable for use on pulsating flow and must be installed with a minimum of 10 D (10 x nominal pipe diameter) of straight pipe behind the pump.

### Application:

Central heating and cooling systems with closed circuits, for operation with non-aggressive fluids.

Size	$k_{vs}$ value	Item no.
DN 15	5.5	1075004
DN 20	10.2	1075006
DN 25	20.2	1075008
DN 32	34.7	1075010
DN 40	44.9	1075012
DN 50	104.4	1075016
DN 65	175.0	1075020



DN	D*	L	H	t	SW**
15	G $\frac{1}{2}$	60	40	12	27
20	G $\frac{3}{4}$	70	49	13	34
25	G 1	80	56	15	41
32	G $1\frac{1}{4}$	95	60	16	51
40	G $1\frac{1}{2}$	105	70	18	55
50	G 2	130	80	20	70
65	G $2\frac{1}{2}$	160	105	20	90

Dimensions

\* G according to ISO 228

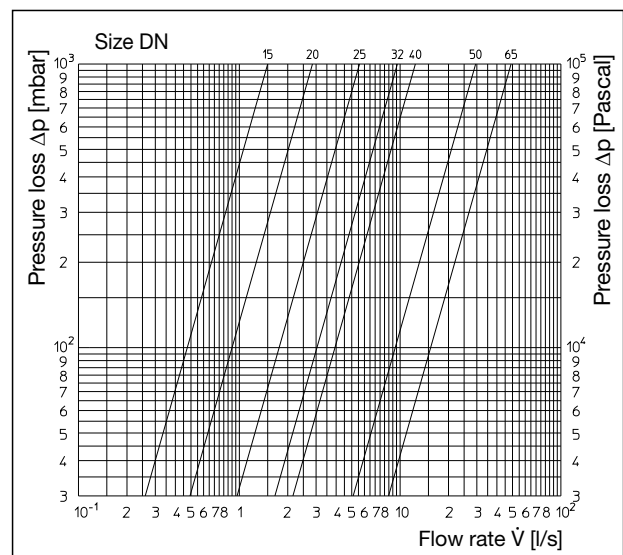
\*\* SW = spanner size

OVENTROP GmbH & Co. KG  
Paul-Oventrop-Straße 1  
D-59939 Olsberg, Germany  
Phone +49 (0)29 62 82-0  
Fax +49 (0)29 62 82-450  
E-Mail mail@oventrop.de  
Internet www.oventrop.de

For an overview of our global presence visit [www.oventrop.de](http://www.oventrop.de).

Subject to technical modification without notice.

Product range 5  
ti 179-EN/10/MW  
Edition 2015



Flow chart