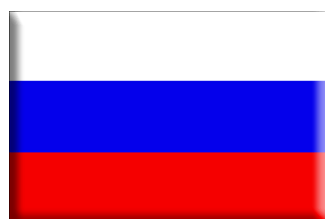


FOURTECH



SPARE PARTS CATALOGUE

- October 2015 -

HOW TO READ THE SPARE PARTS CATALOGUE

In the spare part catalogue, after the exploded diagrams, there are the components lists of the boilers; this is the meaning of the different columns:

Pos. Identification number of the component in the exploded diagram of the boiler.

Description Short description of the component.

Code BAXI S.p.A. code of the component.

Tab. XX XX is the exploded diagram number of the boiler taken into consideration.

From serial number Date (year and week) identifying the beginning of production of a component (taken from the serial number of the boiler).
e.g. 1201: year 2012 (1 identifies the decade 2010-2019; 2 identifies the year) – 01th week.
If the box is empty, the component is in use from the beginning of production of the boiler.

To serial number Date (year and week) identifying the end of production of a component (taken from the serial number of the boiler).
e.g. 1225: year 2012 (1 identifies the decade 2010-2019; 2 identifies the year) – 25th week.
If the box is empty, the component is still in use.

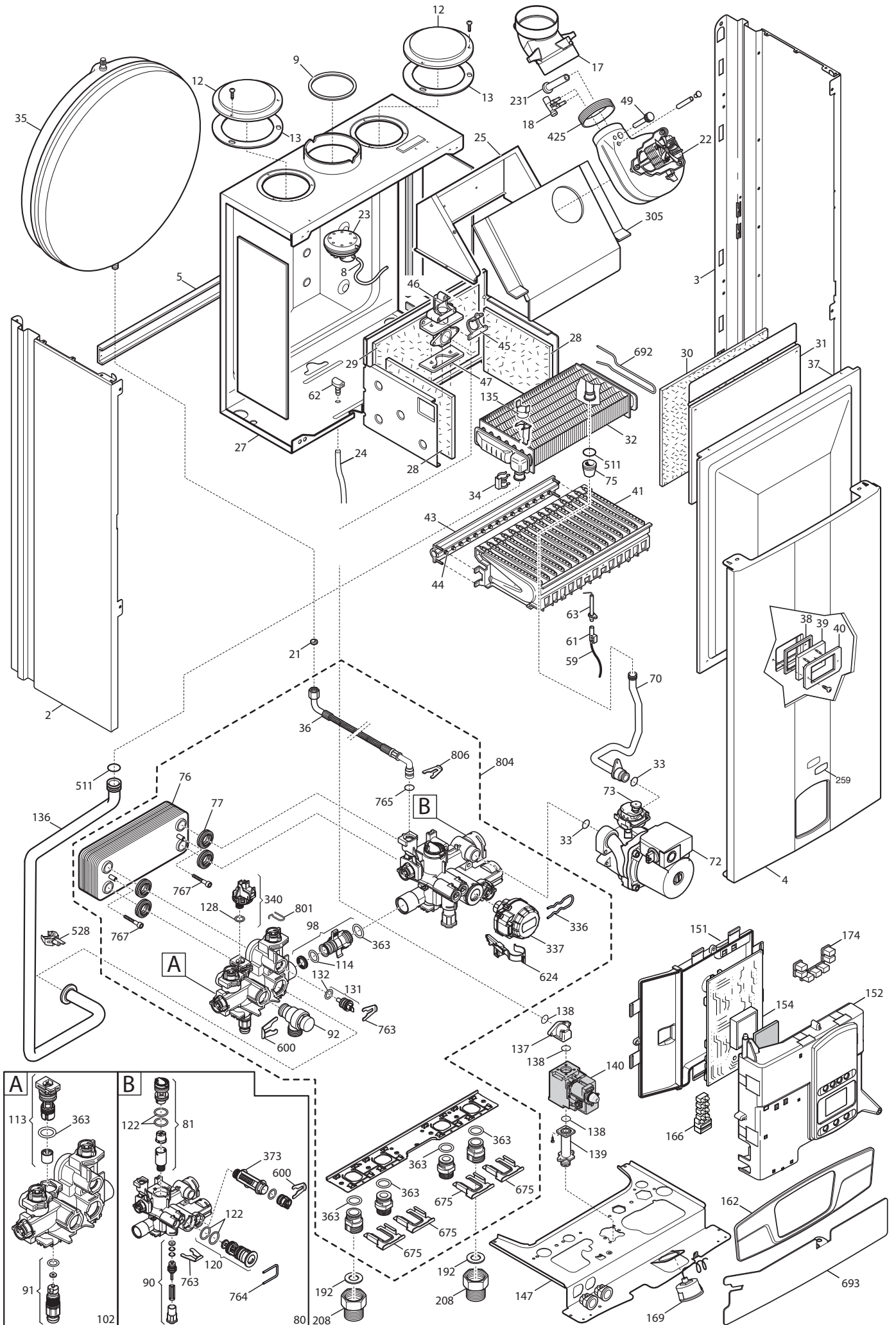
Interchangeable It identifies the interchangeability between the new component and the old one.
YES: components are interchangeable.
NO: components are not interchangeable.

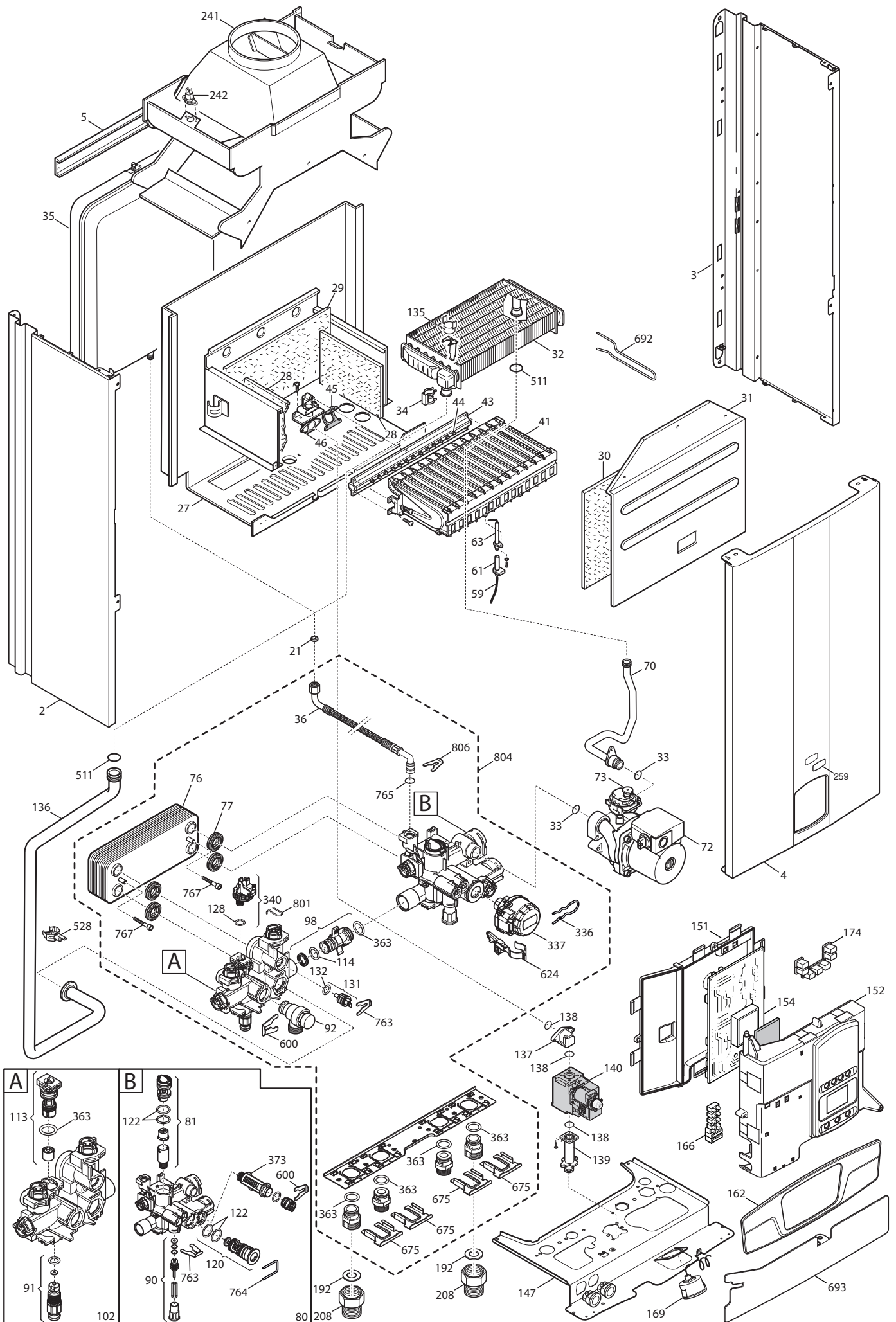
TABELLA COLLEGAMENTO CODICE CALDAIA - ESPLOSO TABLEAU CONNECTION CODEX CHAUDIERE - VUE ECLATEE BOILERS CONNECTION BOARD - EXPLODED VIEW

BOILER CODE	BOILER DESCRIPTION	EXPLODED REF.
CODICE CALDAIA	DESCRIZIONE CALDAIA	RIF. ESPLOSO
CODIGO CALDERA	DESCRIPCION CALDERA	REF. EXPLOSIONADO
CODE CHAUDIÈRE	DESCRIPTION CHAUDIÈRE	RÉF. EXPLOSÉE
CSR466243681	FOURTECH 24 F RU	Tab 365
CSR462243681	FOURTECH 24 RU	Tab 366

FOURTECH

Pos	Code	Description code	24 F		To serial number	From serial number	Interchangeable:
			CSR462243681	CSR46243681			
45	5407940	GASKET-BURNER MANIFOLD	●	●			
46	5657180	ADAPTOR-MANIFOLD	●	●			
47	5407810	GASKET-MANIFOLD ADAPTOR		●			
49	5409520	HOSE ADAPTER CAP		●			
59	710430800	IGNITION CABLE L=250 RESIST.	●	●			
61	5407830	INSULATION BOOT - ELECTRODE	●	●			
62	5409570	SEALED CHAMBER HOSE ADAPTER		●			
63	8422570	ELECTRODE - IGNITION	●	●			
70	5698720	PIPE PUMP/EXCHANGER ATM BITRON	●				
70	5698730	PIPE PUMP/EXCHANGER FF BITRON		●			
72	721957300	PUMP 1 SPEED 6MT NO CE	●	●			
73	710139500	AUTOMATIC AIR VENT WI	●	●			
75	5404670	GROMMET - PIPE ASSEMBLY		●			
76	5686660	DHW PLATE EXCHANGER 10 PLATES	●	●			
77	5404520	DHW PLATE EXCHANGER GASKET	●	●			
80	711033700	COMBI HYDROBLOCK RETURN BIT. ECO	●	●			
81	710048100	DHW CARTRIDGE	●	●			
90	710046600	FILLING TAP ASSY	●	●			
91	710045500	DISCHARGE TAP CONNECTION	●	●			
92	710071200	SAFETY VALVE 3 bar NOVASFER	●	●			
98	710046300	BY-PASS CONNECTION ASSY	●	●			
102	711033600	COMBI HYDROBLOCK DELIVERY BIT. EC	●	●			
113	710048300	BY-PASS CARTRIDGE	●	●			
114	710046400	O-RING d.15,54X2,62	●	●			
120	721403800	3VV CARTRIDGE	●	●			
122	710047800	O-RING d.23,47X2,62	●	●			
128	710048800	O-RING d.8,9X1,9	●	●			
131	721309400	NTC SENSOR NICKEL	●	●			
132	710049100	O-RING d.11,91X2,62 OR115	●	●			
135	9951610	LIMIT THERMOSTAT 105°C	●	●			
136	5698740	PIPE EXCH./H.INLET ECO4 ATM	●				
136	5698750	PIPE EXCHANGER/H.INLET ECO4 FF		●			
137	5214270	GAS V. ELBOW OUTLET OPEN FLUE	●				
137	5214280	GAS VALVE ELBOW OUTLET FF		●			
138	5402010	O RING 22.22x2.62	●	●			
139	5206620	CONNECTOR-GAS VALVE INLET	●	●			
140	5653610	GAS VALVE - SIGMA 845048	●	●			
140	5665220	GAS VALVE HON.	●	●			
147	5698770	CONNECTION TRAVERSE ECO4	●	●			
151	631660	CONTROL PANEL ECO4	●				
152	5698880	CONTROL PANEL ECO4 BAXI	●	●			
154	5702450	PCB GROUP BERT&PART HDIMS 02	●	●			
154	710825300	PCB SM11469	●	●			
162	5698910	PANEL PLATE ECO4 BAXI	●	●			





BAXI

BAXI S.p.A.
Via Trozzetti, 20
36061 BASSANO DEL GRAPPA (VI)
ITALY
Tel. +390424517111
Telefax +390424517379
E-mail. service@baxi.it