



## Clean, clear water has never been easier

Water sediment filtration for residential applications

### Honeywell FF06 Water Filter

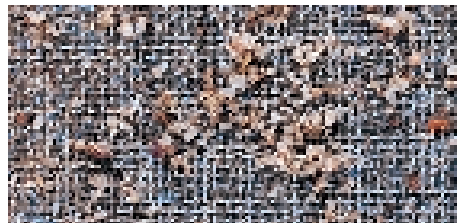
**A**ll water has sediment, whether from a well, or from nearby construction shaking particles from pipes, or from older pipes releasing their build-up.

Now homeowners can say good-bye to *virtually everything* that clouds the water supply—sand and clay, particles from cement pipes, shards from iron pipes, scale from old mineral deposits. A Honeywell FF06 Water Filter removes particles smaller than the finest beach sand.

- **Water system appliances will last longer.** The FF06 Water Filter removes clogging, corrosive particles from the water that flows through domestic and recreational water systems. The dishwasher, water softener, water heater and ice maker will provide optimum performance when cleaner water flows through them. The sensitive components in swimming pool systems and sprinkler systems will operate more reliably, too.

- **Life will be simpler.** Rinsing debris from the FF06 mesh screen requires a simple turn of a valve. If the filter's mesh screen is heavily contaminated, replace only the mesh screen, not the sump holder.

- **Fixtures and surfaces will keep their sparkle.** Sediment blasting out of faucets can scratch metal fixtures and ceramic surfaces, robbing them of their natural gleam and making them look old before their time. An FF06 filter helps surfaces keep their shine.



The Honeywell FF06 Water Filter catches particles such as these before they can damage your water appliances, sandblast your fixtures, and clog other point-of-use filters.

- **The FF06 provides a low cost, permanent filter that:**

- Saves you money. You won't have to pay for another filter cartridge.
- Saves you time. You won't have to drain your water system.
- Prolongs the life of your point-of-use filters.



**Easy-care  
water filtration**

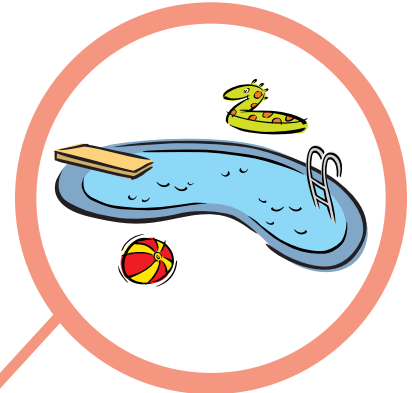
# Remove sediment before it damages your investments

Use the FF06 Water Filter for clearer water and better performance in home water systems. To clean, simply open the valve tap to rinse out all the dirt and sediment trapped in the filter's mesh and cup—with no take apart or drain down required.

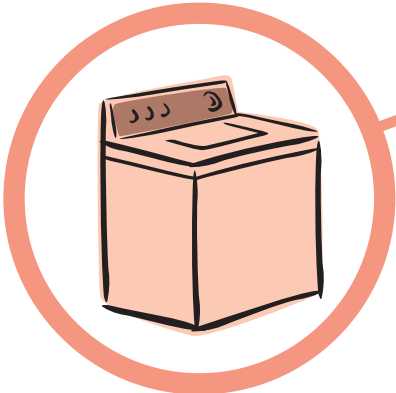


Sediment can cause a loss in water pressure due to clogged pipes and shower heads. It can also sandblast away the luster of fixtures and surfaces.

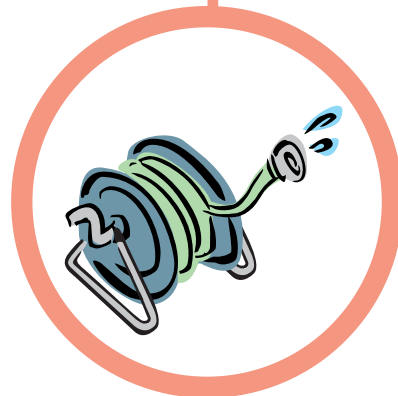
**M**any homeowners use a kitchen-sink water filter, but it does nothing to protect the water appliances and fixtures inside and outside the home. The FF06 Point-of-Entry water filter removes sediment from water as it enters the house, providing worry-free clear water for every water appliance in the house, and for all its fixtures and surfaces, too.



Cleaner water house-wide means that water softeners, swimming pool systems, water heaters and more will stay cleaner, give maximum performance and need less maintenance.



Sediment-free water keeps your washing machine and dishwasher clean and in top form. It also benefits such appliances as ice makers and dishwashers.



Sediment can clog individual sprinklers and sprinkler-system heads and keep them from watering the full area they otherwise could. An FF06 water filter can save hours of lawn-upkeep time.



An FF06 house-wide water filter saves money by prolonging the life of your point-of-use taste/odor filters which may require frequent, expensive and messy cartridge changes.

**Honeywell**

**Home and Building Control**  
Honeywell Inc.  
1985 Douglas Drive North  
Golden Valley, MN 55422-3992

**Home and Building Control**  
Honeywell Limited  
155 Gordon Baker Road  
Toronto, Ontario M2H 3N7

 **Boiler-Gas.ru**  
Перейти на сайт

